

63rd Red Grant Regatta
July 18th, 2009

Mayor's Cup Cruiser Race

Race Info

www.redgrant.org



Starting Sequence:

<u>Time Before Start</u>	<u>Flags</u>	<u>Sound</u>
5:00 - Warning Signal	A white pennant flag with a red dot in the center, and a red arrow pointing upwards to its right.	1 Sound
4:00 - Preparatory Signal	A white pennant flag with a red dot in the center, and a blue square with a white center and a red arrow pointing upwards to its right.	1 Sound
1:00 - 1 Minute	A white pennant flag with a red dot in the center, and a blue square with a white center and a red arrow pointing downwards to its right.	1 Sound
0:00 - Start	A white pennant flag with a red dot in the center, and a red arrow pointing downwards to its right.	1 Sound

Radio Communication:

Please monitor VHF 80 for announcements.

Skippers Meeting:

The informal Cruiser Race Skippers Meeting will be held in the galley at approximately 10:30am; all racers are encouraged to participate. Taking into consideration the conditions, the start time will be announced at this meeting.

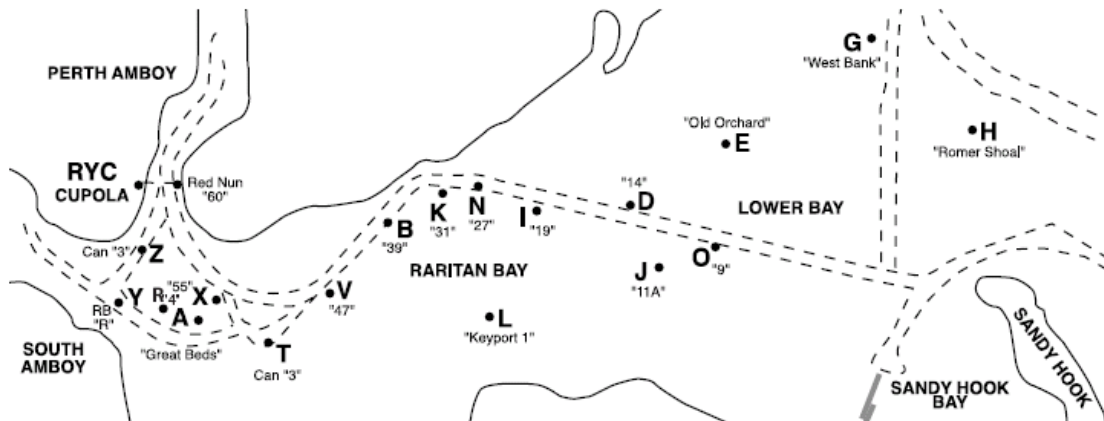
Course:

The course to be sailed will be discussed during the Skippers Meeting and posted on the Official Notice Board located on the RYC deck immediately following the Skippers Meeting, if not earlier.

Entry Requirements:

Boats must have participated in at least one (RYC or other Yacht Club) functioned cruiser activity in the past two seasons.

Race Mark Map:



Start:

All boats will start together using the sequence highlighted above. The start will be located between an orange flag on the race committee boat and the nearest mark. The start will be in the vicinity of mark Z near the RYC fleet.

Boats “over early” will be signaled with the individual recall flag –



It is the skipper’s responsibility to identify if their boat was over early, however, as a courtesy, the race committee will attempt to hail sail numbers of the boats that started prematurely on VHF 80. The absence of the courtesy hail is not grounds for redress. Boats over early will need to turn back, and once entirely behind the starting line, start again. Once all boats that started prematurely, restart, the individual recall flag will be lowered.

Finish:

The finish line will be between a flag on the cupola at the end of the RYC dock and the red government nun (# 60) off Staten Island. When finishing, boats must cross the line on the Perth Amboy side of the channel. An imaginary line is drawn halfway between the RYC fleet and mark 60. Do not cross the finish line southeast of that imaginary line.

PHRF Ratings:

A complimentary guest rating will be issued to all boats racing in the Mayor’s Cup Cruiser Race. When completing the registration form, please include all info requested (largest jib, type of propeller, jib attached to roller furling, etc).

Thank you for your participation and support.